

Seasonal Influenza Vaccination

Indications

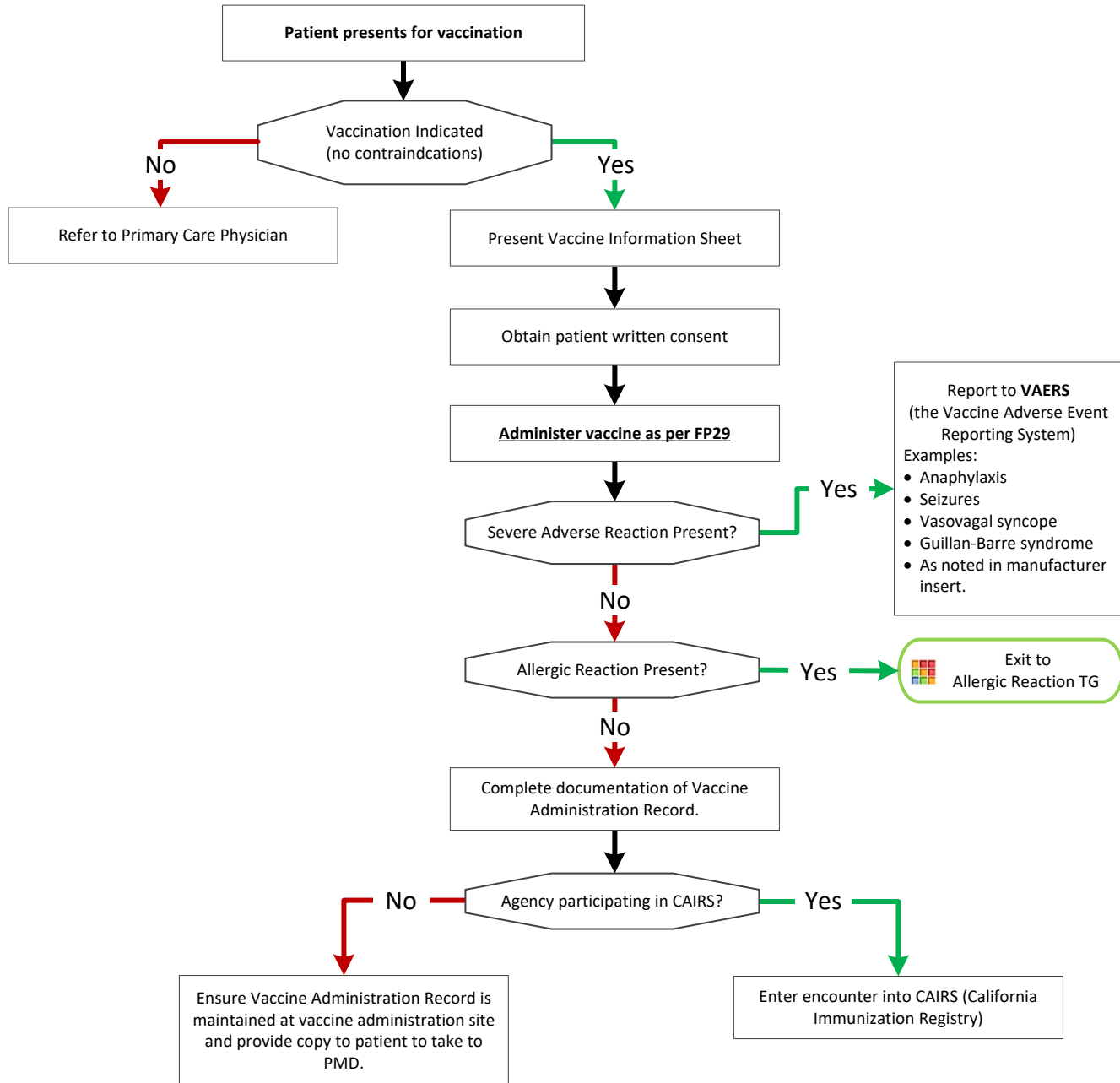
- Adult and children ≥ 14 years old
- Demonstrated decision making capacity
- Represents target population

Contraindications

- Currently sick
- Known allergy to a component of vaccine
- Severe Allergy to eggs
- Allergy to Thimerosal
- Reaction to previous influenza vaccination
- Hx of Guillain-Barre Syndrome
- Children < 14 years old

Minor Adverse Effects

- Injection site
- Soreness, redness, swelling
- Systemic
- Low-grade fever
 - Headache
 - Nausea
 - Muscle aches
 - Fatigue



Adult Medical Treatment Guidelines for Declared Disaster

